

**WARWICK POTTERS ASSOCIATION**  
**PO BOX 343 WARWICK QLD 4730**

---

**NEWSLETTER SEPTEMBER 2025**

Welcome to the wonderful season of Spring. Let your imagination and creativity bloom in spectacular fashion.

**FUND RAISING**

On 20th September [ Saturday ] we will be holding a brain storming session from 9am until 11am at the Club House. Bring your ideas [ can be wacky ] to share and enjoy a cuppa at the same time. Please let Jillian or Pauline know if you can attend.

**WARWICK ART GALLERY - Miniatures**

Submissions open: Monday 11 August 2025  
Submissions close: Friday 27 September 2025  
Artwork delivery: To Warwick ART GALLERY 23rd. October 2025 by 4pm  
Exhibition Dates: 30 October to 17 January 2026  
Entry fee is \$15 for Gallery members and \$18 for non-Gallery members.

Please enter on-line via Warwick Art Gallery website.

## **GROVE GALLERY EXHIBITION**

A reminder that the Warwick Potters have an exhibition running from 14th. May to 11th July 2026 in the Grove Gallery. Plenty of time to let your creative juices flow with an amazing creative piece. The theme for the exhibition will be STARLIGHT and SAUCERY.

As we have two events in the first half of 2026 this theme can run through and be used for both. Up to you!

## **WPA GALLERY**

The Gallery Co-ordinators would like to create a new way to showcase the names of our artists in the gallery.

If you display work in the gallery and you have a social media page or online shop that you would like to be printed on our "Artists On Display" poster, please email a link to your page to Miranda at [miranda\\_jennings@ocloud.com](mailto:miranda_jennings@ocloud.com)

The Gallery Co-ordinators will then create a QR code that links to your social media page/shop, and print this on the poster. Any interested visitors to the gallery can then scan the QR code to see more of your work.

AND if anyone would like to volunteer in the gallery, please email Miranda as well. The Gallery Co-ordinators - Lyn, Penny, Tegan and Miranda [awesome peeps].

## **Warwick Potters Gallery Coordinators Report**

In the past month, our gallery has been open for 6 hours over 2 mornings. Although there were no sales, we have cleaned, rearranged, catalogued and sorted out issues from the stocktake after the Jumpers and Jazz Soup night.

. It was a group effort to stocktake. We had a plate that was missing, an owner and a vase that was sold but still at the gallery. These issues have been resolved.

. To ensure that all of the paperwork is completed, we have changed the procedure to put items in the gallery [ this is not new, this process has been initiated 3

months ago ]. There is a shelf on the working side where pieces need to be left and the creator putting information about the pieces into the gallery folder.

. Only gallery coordinators will position artwork into the gallery. As we open the gallery twice a month, no pieces will be left out. All pieces will be included.

. During Rodeo weekend, the gallery coordinators will man the potters stall at the Rodeo markets, please let the members know if you would like your pieces included in the stall. We will continue to gain permission for pieces to be moved from the gallery to the stall.

. Xmas Gallery opening was a question for our next meeting. We are looking at opening the gallery before Christmas at least twice. But input by the club would be appreciated, especially if that also involved volunteers to assist during work days.

Lastly, Lyn and Penny are also the Show Coordinators, a discussion began - to merge the theme for the show into the Warwick Art Gallery space that we will be using in 2026. Lyn and Penny feel that starting to promote the show for March, means people can start to work on extra pieces for these 2 events in the first half of the year.

We proposed that the theme title STARLIGHT and SORCERY [spin on sorcery to be a potter twist - cup and saucers ] to be used for next years Art Gallery.

Thank you for your time.

Feel free to discuss any issues that are raised with the gallery team. We are working to the benefit of everyone at the club. If you would like to be involved, let us know.

## **LOST**

The key to the filing cabinet within the Warwick Potters House has disappeared. We are putting a call out to everyone to see if it has been sighted!!! Can you help!!!

## **HELP NEEDED**

The kiln shelving needs cleaning. Ros will bring the equipment necessary for cleaning. Please help should you have time. Anyone who can help please let Jillian our President know or Pauline our Secretary. A date will then be decided which suits a

## REMINDER

An update on the Warwick Rodeo Markets. On 25th September sites went "live". See Miranda and Tegan if you require further information.

## CHRISTMAS TREE

St Marks Anglican Church Tree decoration call out from 16-19 December. If you would like to decorate a tree for the Warwick Potters as a group or individually please contact Jillian our President.



## **POTTERS CORNER**

It gives me great pleasure to introduce to you Nob Creek Pottery, Byfield Queensland. Owned and operated by the lovely Sue McBurnie and Steven Bishopric.

Sue and Steve have been operating Nob Creek Pottery since its inception in 1979. Steve has represented his work at State, regional and international galleries and private collections.

Sue trained as an art teacher and taught in secondary schools before heading to Byfield to join Steve. Her speciality is slab rolled pieces and sculpture work.

Steve and Sue produce a lot of work collaboratively. Steve throws and Sue will carve and decorate.

Many visiting potters come from USA, Europe, Japan and other areas of Australia and will live and work at the property.

The love of pottery making and wood firing are explored during a four day traditional Anagama wood firing. The unexpected results astonish those who attend the firings. The love of pottery started 50 years ago for Steve and gathers his thoughts from his head through to his hands. Steve's mentors are Jack Troy, who is the world's foremost wood firer, from Pennsylvania and Chester Nealie from New Zealand. Steve loves fire and woodfiring and his anagama kiln was the first built in Queensland. Although wood

firing is his first love in Ceramics, they don't fire the anagama often, as the gas fired work is more saleable.

Steve and Sue both draw heavily on influences from nature and the environment and use the watercarving process, using the Byfield Fern, which they developed some 15 years ago through a process of experimentation.

The great thing about clay is that it is humbling. You can't get too precious about any particular piece as the kiln may have influences beyond your control that alters your expectations.

Clay is such a versatile medium and Sue likes to work with an antique slab roller that used to be a leather press. Sue uses drier clay and builds, constructs pieces. Steven uses a wheel and prefers softer clay.



Sue and Steve love living in Byfield at Nob Creek Pottery and the gorgeous surrounding environment. They really enjoyed running the business together and have travelled extensively gaining much inspiration and knowledge.

Although they haven't as yet opened their Byfield nook to online classes/tutorials it may be something in the future to aspire too.

They both prefer anyone who is interested in the pottery craft to come to Byfield and experience their welcoming environment of Byfield and perhaps pick up on new techniques, ideas and experiments.

Clay is such a versatile medium, that they feel it offers something for everyone.

Byfield is located approximately 78 kilometers north of Rockhampton and 25 minutes north of Yeppoon on the Central Queensland coast. Byfield National Park and State forest are known for their ecosystems including towering sand dunes, beaches, rainforests and creeks.

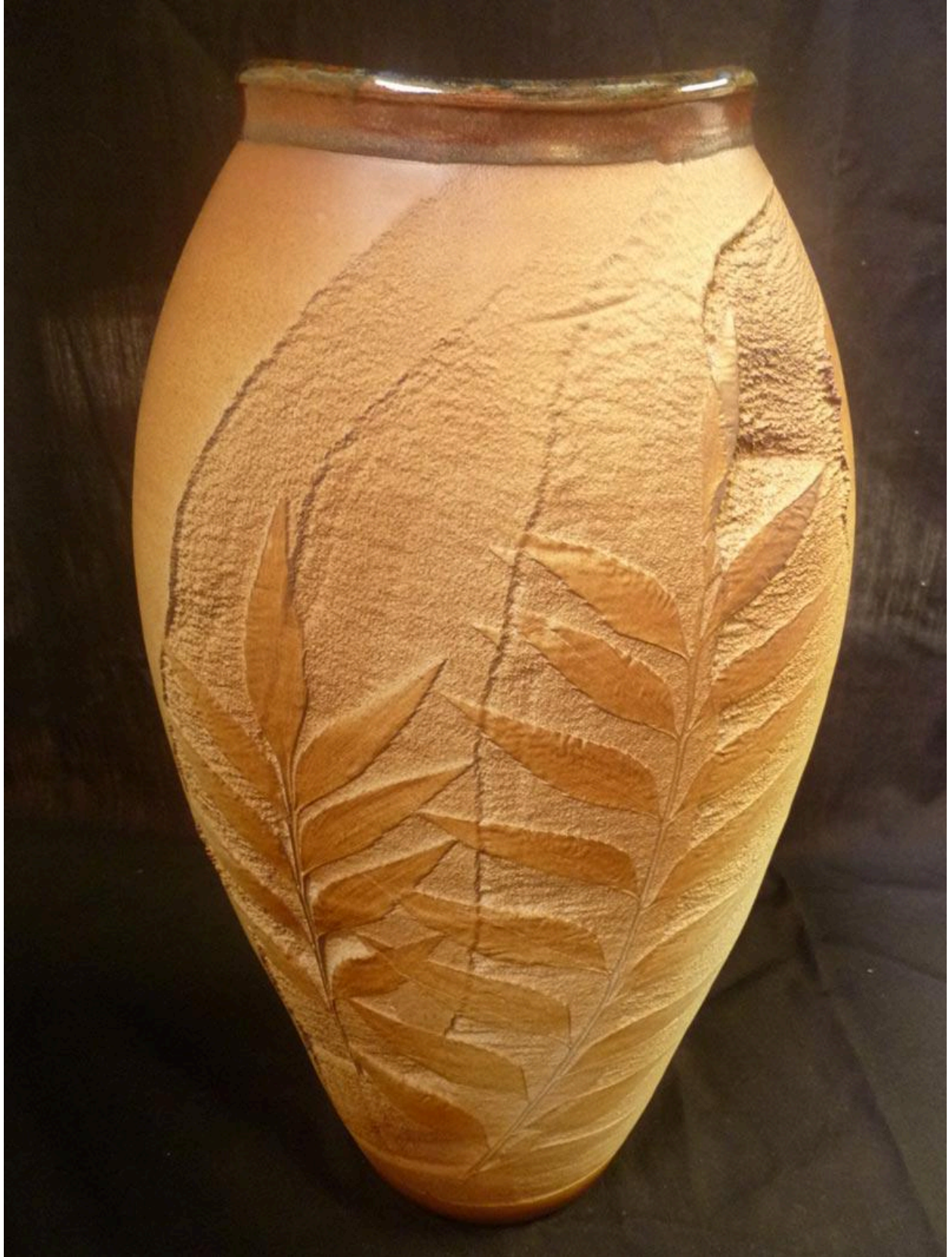
A beautiful picturesque village.

These are a few of the amazing images captured of both Sue and Steve's creations for you to view.









Watercarving





New pl  
Sue M





Anagama firing

Any queries please contact Jillian McCulloch [president@potters.org.au](mailto:president@potters.org.au)

Next meeting of the Warwick Potters will be on 6th October 2025 at 5.30pm.

